

RAILHOPE NEWSLETTER INTERNATIONAL 2024



Vision
We live hope...

Mission
... by connecting Christians in railroads and public transport systems worldwide; praying for each other and our companies, encouraging an authentic life with Jesus Christ.

Passion
We promote and combine faith and life in the professional world. Through our thoughts, speech and actions we seek to grow in and to be inspired by a relationship with Jesus Christ. With passion, we serve our colleagues and seek their common welfare and well-being and we honour the biblical God.

RailHope International

In our family, there was sometimes a situation where I was present without being present. The children's question, «Dad, have you been listening?», exposed the purely physical presence in the absent-mindedness.

If we set off on a short sprint through the Bible, we can discover that the divine dynamic is deeply interwoven with presence. The history of the world begins with God walking around in the garden after the creation (Genesis 3:8). HE is there. HE is present.

At the end of the biblical narrative, we end up in an eternal city where God sits on the throne and we can see His face (Revelation 22:3-4). Once again, the presence of God is central, even though we lost it right at the beginning of human history. The fall of man robbed mankind of this original state and the divine presence was lost. Since then, we humans have been trying to find the lost paradise or God's presence again ...

Missionary presence

Perhaps the idea may be new and fresh to you that not only is God Himself is present, but that His mission to us humans also flow from His presence. The first priority is to be with Jesus – because without abiding in Him, we cannot bear fruit by ourselves (John 15:4). Definitely, my understanding of mission was and is very much characterised by a performance-oriented Christian activism. In the story of the woman at the well, who was socially ostracised, Jesus marks his presence and does not run off to the next project.



*Ulrich Berger (Traindriver SBB):
«We combine faith and profession.»*

When the twelve and the 70 were sent out, it is written that they should go into the houses and «stay» there (Mark 6:10). That's why I like the idea of missionary presence, from which other commissions flow, such as healing the sick who are there and telling them: «The kingdom of God has come near to you» (Luke 10:7–9).

Thank you

I could not be present at the RHI-Meeting 2023 in Ognatun Norway because I had to recover from my injury, but I felt very well supported by you. Last but not least I would like to say a big thank you to Børge Salte (leader of RailHope Norway) and his team who organised that meeting (including the General Assembly) very well. I am convinced it was a great benefit for all of us and we were connected physically or online to share spiritual encouragements, information and prayers. Thank you so much to all of you who make RailHope International possible! **We live hope ...**

Ulrich Berger (CH),
President of RailHope International (RHI)

*April 2023: RailHope International representatives
and board members in Ognatun, Norway*



WORLDWIDE NETWORK

Europe

Great Britain

The RHI Prayer Network has existed since 2007 for intercessors who pray regularly for the most important concerns of RHI.

As coordinator, I compile the prayer requests and ensure that the RHI prayer letter is published online four times a year for our intercessory team. You can subscribe to the prayer letter at prayerletter@railhope.net.



Stephen Rowe, Railway Chaplain (GB) & RHI Prayer Letter Coordinator

**Independent
Confidential
Impartial**

Did you know?

Railway Mission has been serving the railways since 1881.

Whilst we are a Christian based organisation, we provide support to people of all faiths and of no faith.

We have 20 chaplains, full and part time, serving all rail staff in England, Scotland and Wales.

As British Transport Police chaplains, our vetting is extremely high.

www.railwaymission.org

Poland & Belarus

In June 2023 **Maarten Pijnacker Hordijk** (NL) started a mission trip to Poland, Belarus and the Baltic countries. Here are some short experiences and thoughts.

Usually, I am looking for someone who works at Railways and is also a Christian and try to give them the RHI Calendar. At the Polish border station Terespol were some railway people, but they were not interested. I decided to knock at another station office door. A female officer opened, and stood in the doorway. Whereas she was reading the Polish bible quotes on the calendar, she started laughing and made clear to me that she is a Christian! She had little time, as she was alone and at work. I left my details and asked if she would respond to me when she also checked out the Rail-Hope website. I am immensely grateful to God for this encounter and miracle!

Passenger train traffic between Poland and Belarus were discontinued since the pandemic and has not been restored due to the Ukraine war. That's why I'm taking my folding bike from Terespol to Brest, the border station in Belarus. After that, I traveled by train to the capital city Minsk. There I met our RailHope contact **Aleksej Savich** at the train station and he took me to his family over the weekend. It was a very encouraging time and afterwards I left Belarus by train to Lithuania.

Estonia

In Vilnius Lithuania and Riga Latvia, I met a dozen rail Christians and could give them some calendars and RHI Newsletters.

In Tallinn Estonia was a particularly blessed time! I had a nice meeting with **Tiit Tarve** (RHI-Representative of RailHope Estonia (EKRÜ) and Marek Alveus. He has been retired and he told me about EKRÜ that they meet every month for Bible study and prayer for their colleagues as well. There are 8 to 12, but unfortunately almost all of them are retired. So, I hope and pray that the new rail Christians I met will join the EKRÜ. I had translated my tips for finding

▼ Encouraging network-meeting in Seregno/Italy



▲ **Maarten Pijnacker Hordijk** (left) met **Aleksej Savich** (right) in Belarus

more railway Christians into Estonian and e-mailed them. The idea of a dedicated app or Telegram group appeals to them, as does the static one-page website, as a first step towards a regular website. I am very grateful to God that we could experience a heart contact and prayer there!

That trip was a seed of hope and let us continue to pray. May God lead those RailHope Christians to respond to us and thus start forming an (inter)national RailHope family together.

Italy

For several years, **Richman Fernando** has been involved as a contact for RailHope International in the distribution of calendars and prayer meetings with railway workers at Milano-Centrale station. At the same time, a team from RailHope Switzerland, led by Manuel Schoch, has carried out an annual calendar distribution campaign in northern Italy and established a number of further contacts with Christians on the railways. At the end of October, a networking meeting for exchange, encouragement and prayer was organised in Seregno in northern Italy. Since Seregno, the Italian brothers and sisters want to meet online for prayer until the next face-to-face meeting.

Maarten Pijnacker Hordijk (NL, RHI Network Coordinator Europe)



South East Asia

RailHope Singapore

We have ten members in the RailHope Singapore group who are kept posted of the news and needs of RailHope Singapore and RailHope International. The current chairperson is a retired rail engineer. The other members of the group are not able to accept any positions due to work protocol or time constraints. As of date, we are still



looking for believers to serve as Secretary and Treasurer and members.

Since 2018, Peace Community Chapel, has been contributing most of the donations to RailHope International. I am trying my best to make the rail staff take ownership of RailHope Singapore, share the Gospel and raise the monies. As of date, we have not been successful.

RailHope Indonesia

Brother **Joseph Kumar** has a small committee who have been able to pray on trains and meet occasionally at stations, made possible by the courtesy of a government official who is known to them. RailHope Singapore has agreed in principle to support the membership fee and other financial needs of RailHope Indonesia.

Malaysia

I recently went to Malaysia and spoke with two persons in the public transport industry who are considering their involvement in RailHope Malaysia. The Christian workers in the Malaysian rails are few. Establishing a RailHope team in Malaysia is much difficult. But with God all things are possible.

Milton Lazarus (SGP),
RHI Network Coordinator
South East Asia



North America & Sri Lanka

Canada

We need fervent prayers for leaders **Mr James Bruyn** of Calgary, **Mr Kingston Emiliyanus** of Montreal, and **Mr Gideon Burder** of TTC Toronto, for them join together to build RailHope Canada. So far, they have been unable to meet in person or have regular phone or e-mail meetings. They need our prayers and encouragement to coordinate and start RailHope chapters in their cities at the earliest. At the moment, they are the contact persons in their respective cities for RailHope.

USA

We wish **Chris Harkey**, new President of «RailHope America – Railroad Evangelistic Association (REA)», divine guidance in all matters with power, love and wisdom according to 2 Timothy 1:7.

RailHope America takes the opportunity to develop a suitable RailHope Calendar 2025 for the USA. The expertise and design of RailHope International can also be utilised for this calendar project.



▲ August 2023: 82nd National RailHope America Convention in Carlisle (PA), USA

Sri Lanka

Mr Lushan of Colombo and **Mr Dinesh Fernando** of Kandy both of them working for Sri Lankan Railways are the contacts in their respective cities for RailHope. Mr Lushan and Mr Dinesh Fernando are in touch with each other as they prayerfully reach out to other like-minded friends. With prayers and new year greetings.

RHI-Network-Coordinator,
Asia & North America

Registration

- for participants from African countries: southafrica@railhope.net
- for all other international guests: assistant-pr@railhope.net

More information and prices:
www.railhope.net
www.railhopesouthafrica.co.za

Sister Hazel Govender (SA),
RHI Network Coordinator Africa



Africa

South Africa

Bringing hope into the workplace through prayer!

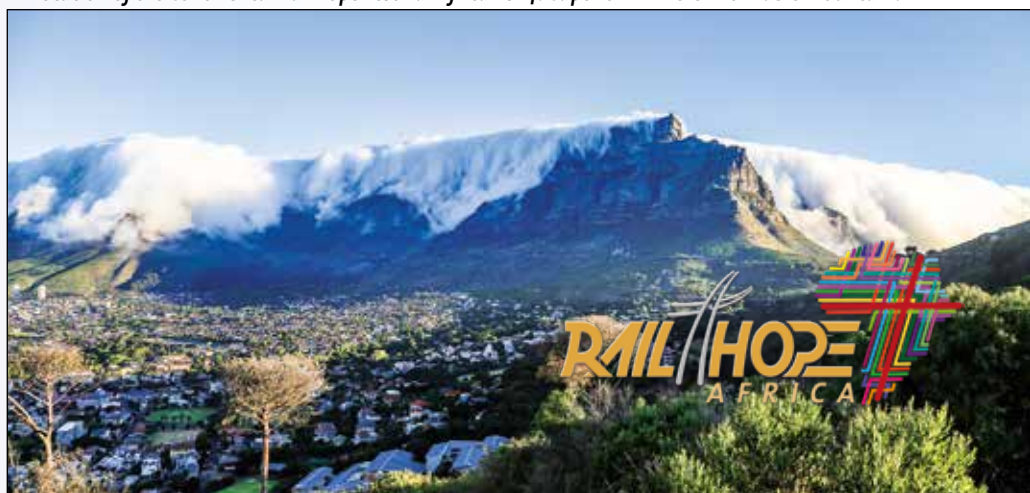
Welcome to the **Continental RailHope Festival Africa 2024** in Cape Town, South Africa. Theme: **Serving like Jesus**.

It will be held on **March 8 – 13** at Protea Breakwater Hotel. We pray for God's presence, inspiring international fellowship, encouraging exchange of experiences and practical impacts for our Christian lives.

▼ Location of the Continental RailHope Festival Africa 2024: Cape Town – here with Table Mountain.

RailHope Festivals 2025 & 2026

We pray for RailHope Singapore and encourage them as they plan and organize a **Continental RailHope Festival Asia 2025** in Singapore, October 2 – 5. The venue for the **RailHope International Centenary Jubilee** in 2026 will be Interlaken, Switzerland. We pray for the team preparing the event, and for **Rudolf Büchi**, the RHI Jubilee Coordinator. More information on both events will be made available as soon as possible.



Giving hope worldwide

RailHope International (RHI) is planning to design and print another high-quality calendar for 2025, including twelve fantastic pictures from five continents combined with Biblical wisdom and inspiration, to be distributed in India and other countries in Europe and America.

Multilingual

For 2024 two versions were available with four languages each (English/Czech + Norwegian/Finnish) and German/French + Polish/Dutch. These contain 'The Four Signals' to present the Gospel of Christ.

Multifunctional

The calendar works both as a wall calendar or on the table with the included stand. This convenient format (24 cm/9.5 in wide) is perfect to give as a gift. The calendar is printed on both sides with two languages on each side. The desired language can be chosen by flipping over the entire calendar.



Donations

The cost of printing the 2024 calendars has been covered. **Thank you so much for supporting this project in prayer and with your donations!**

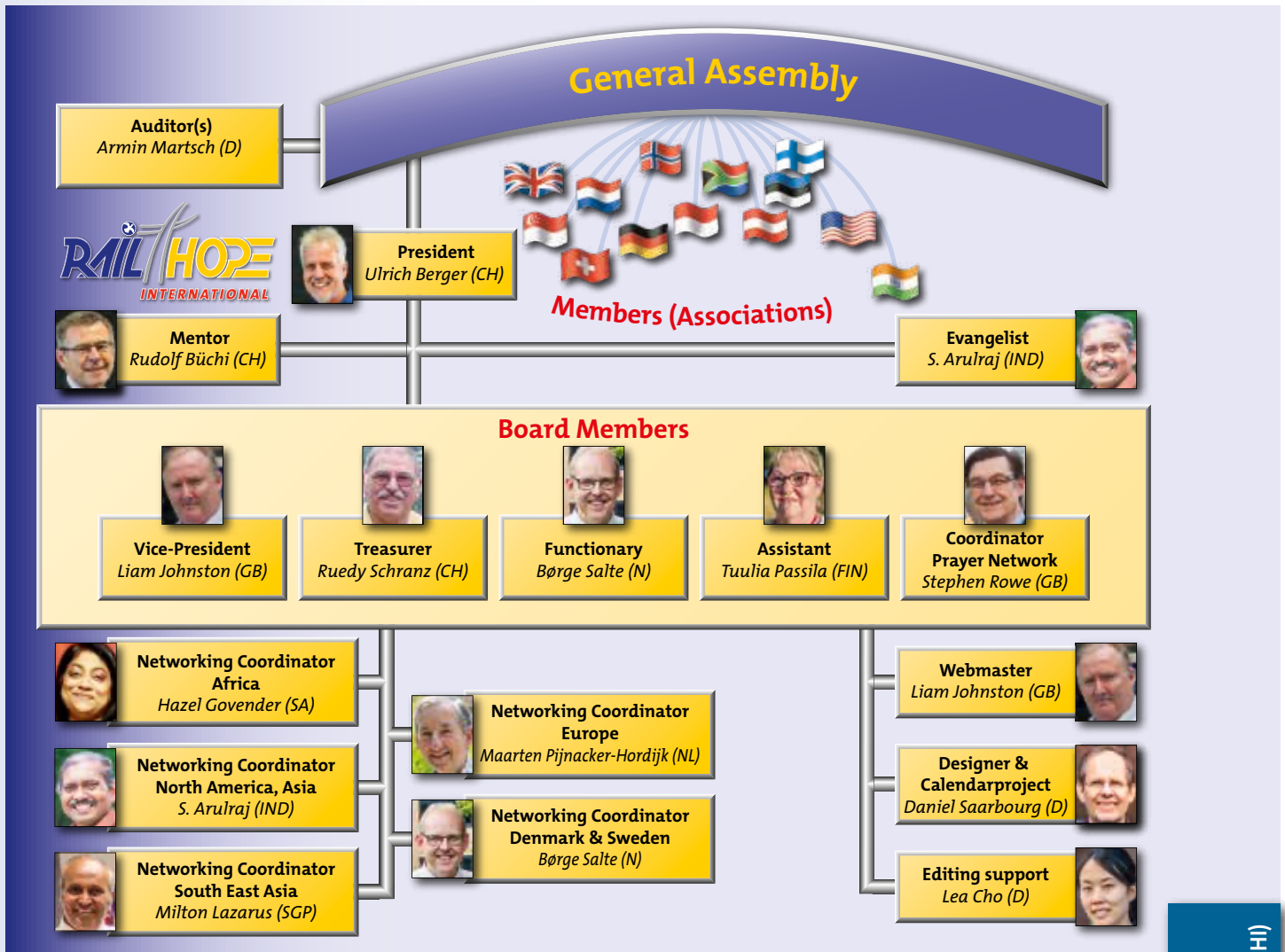
We are thankful for donations to produce the calendar 2025. Please, help us to 'make the mission possible' in the future as well!

To donate: https://www.paypal.com/donate/?hosted_button_id=P8YZNBJVD6V9L



Thank you and God bless you abundantly!

WWW.RAILHOPE.NET



Impressum:

Design: Daniel Saarbourn
 Editing: Ulrich Berger, Lea Cho, Liam Johnston
 Photos: C. Hofbauer, D. Saarbourn, U. Berger, M. Pijnacker Hordijk, RailHope America

Postal address:

RailHope International • CH-4000 Basel
www.railhope.net • Info@railhope.net
 Account holder: RailHope International
 Account number: 91-337157-2 (PostFinance Ltd., CH-3030 Berne)
 IBAN: CH74 0900 0000 9133 7157 2 • BIC: POFICHBEXXX